

ARCWORLD® LC SERIES

PRE-ENGINEERED ARC WELDING SOLUTIONS

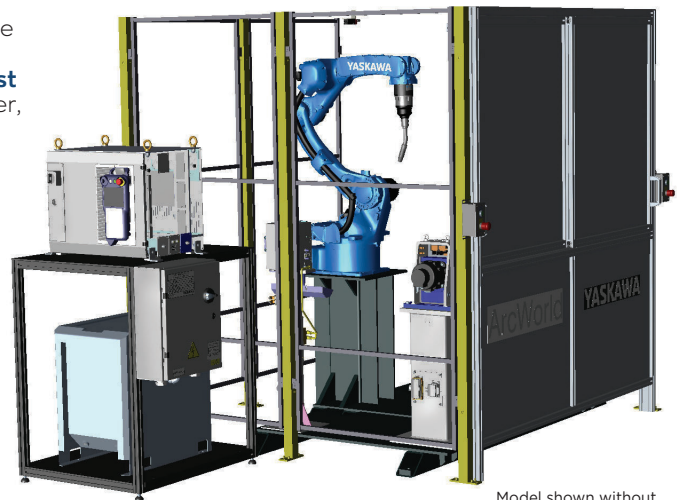
INVENTORY SALE!

We have redesigned our ArcWorld LC fencing to better accommodate longer and boxier parts. Which means we have a few of our original fence kits left. To clear our limited inventory, **we're offering these complete ArcWorld cells at an incredible discount for anyone looking for the most economical, complete automated welding solution.** The robot, controller, torch, and power supplies are the same trusted units found in all of our industry leading ArcWorlds. **Limited availability.**

► **ArcWorld LC with Two Table Stations:**
Miller AutoContinuum 350 - \$69,990
Lincoln R450 - \$78,990

► **ArcWorld LC with Two 180kg Headstock Stations:**
Miller AutoContinuum 350 - \$79,990
Lincoln R450 - \$88,990

Contact your Regional Sales Manager or Josh Leath at joshua.leath@motoman.com to purchase or for more information.



Model shown without weld curtains for interior visual

*Modifications to cell, torch package, or addition of torch reamer will need to be quoted by a Yaskawa sales representative. While supplies last.

KEY BENEFIT

Lite Cell (LC) is ideal for job shops and manufacturers looking to automate small to medium part welding

APPLICATION

Arc Welding

MODELS

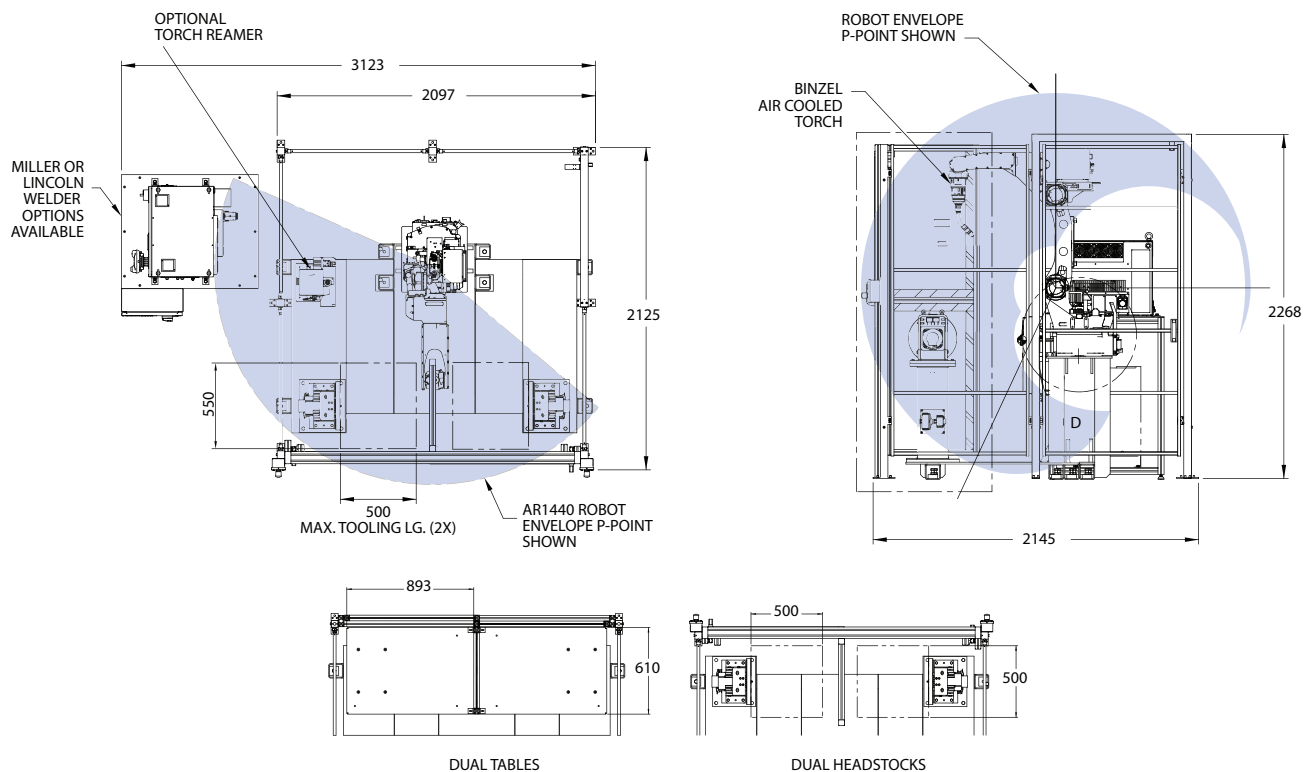
ArcWorld LC, Dual Tables
ArcWorld LC, Dual Headstocks

CONTROLLER

YRC1000

- Flexible single or dual workstation arc welding cell for Tier 2 suppliers or general fabricators with smaller parts and lighter volume.
- The dual workstation configuration is available with fixed tooling tables or with two MH185 headstocks. This allows one part to be loaded/unloaded while the other part is welded, and eliminates sweep time of part positioner between part processing.
- Tooling can be quickly changed. Each workstation can be tooled for different parts or be used for sequential operations.
- Sliding (dual station) doors provide safe access to workstations.
- A single high-speed Motoman® AR1440 arc welding robot welds parts with efficiency and consistent high quality.
- Space-saving design features a common base for the robot and positioner(s) or table(s) for quick, easy installation and setup.
- Protective fencing with interlocked door mates up perfectly with the robot and workstation base for installation directly to the floor. Extended fencing option available for optimized robot reach.
- The robot controller, welding equipment and power disconnect are mounted as an assembly on a separate base to simplify shipment and installation.
- Enhanced safeguarding, including Functional Safety Unit (FSU) is fully compliant with latest robot safety standard (ANSI/RIA R15.06-2012).
- Choice of Miller® Auto-Continuum™ 350 or Lincoln Electric Power Wave® R450 robotic power supply.
- Processes from the power supply are accessed by Yaskawa's Universal Weldcom Interface, giving full control of welding parameters and settings from the robot programming pendant.

ARCWORLD LC SERIES



All dimensions are metric (mm) and for reference only.
Request detailed drawings for all design/engineering requirements.

SPECIFICATIONS

<p>Robot AR1440: 12 kg payload; 1,440 mm reach</p>	<p>ArcWorld Welding Package Weld-in-Teach mode function Graphic arc files Digital weld interface Integrated torch package Arm-mounted 4-roll wire feeder Welding power source</p>	<p>MH185 Headstock (optional) 185 kg payload @ 152 mm off-center, 250 mm (7.9") overhang Rated speed: 12.4 rpm Rated weld current: 400A Coordinated motion software</p>
<p>YRC1000 Controller Programming pendant with single point of control Large color touch screen USB and SD card memory storage Standard workcell software functions Multi-tasking (up to 7 jobs at once) Coordinated motion Twin synchronous Mirror copy Ladder logic editing/display Collision detection Software weaving Ethernet port Ethernet I/O options</p>	<p>Common Workcell Features Robot assembly base Robot controller and welding power source assembly Wire mesh panels Dual sliding or swinging doors for access Power disconnect</p>	<p>Total Safety Environment (in compliance with ANSI/RIA R15.06-2012 and Canadian safety standards) Barrier guarding with protective arc curtains Safety-rated, tamper-resistant interlock Interlocked access door at the rear of the cell E-Stop (pendant and door guards) FSU software safeguarding without safety PLC or robot base switches</p>
	<p>Operator Control Push-button operator station mounted at each workstation's barrier door Cycle start palm button Auto/manual selector switch E-Stop palm button</p>	

PROCESS OPTIONS

- Torch cleaner assembly

YASKAWA

YASKAWA AMERICA, INC. 100 Automation Way | Miamisburg, OH 45342
937.847.6200 | motoman.com

Technical specifications subject to change without notice. | Motoman is a registered trademark.
All other marks are the trademarks and registered trademarks of their respective owner.
DS-893-A ©2022 Yaskawa America, Inc. MARCH 2022