

# HC10 WORKSTATION

## WORKSTATION RISER FOR HC10 SERIES ROBOTS

### KEY BENEFITS

Mobile HC10-series solution  
Integrates controller and robot  
Quickly redeployed

### APPLICATIONS

Arc Welding  
Assembly  
Machine Tending  
Pick and Place

### ROBOTS

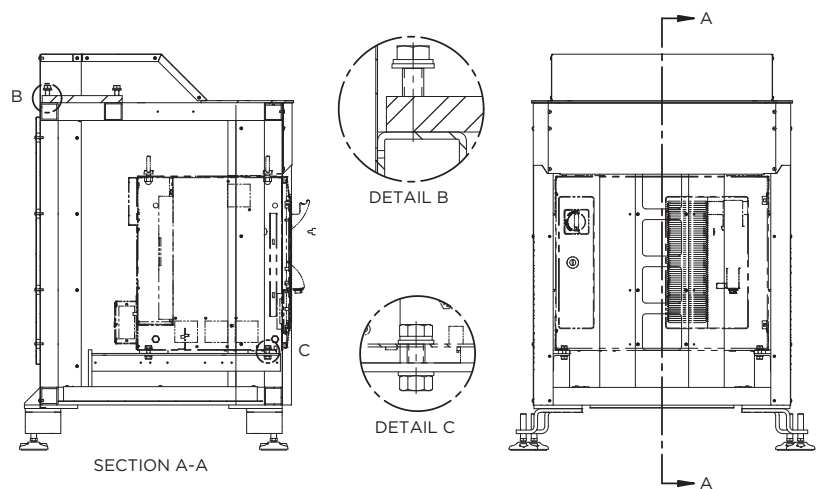
HC10  
HC10DT  
HC10XP  
HC10DTP

### CONTROLLER

YRC1000

- An economical solution for integrating the HC10 robot with the YRC1000 controller into a single package.
- Metal cabinet houses YRC1000 robot controller.
- Cables are internally managed.
- Features a small footprint with comfortable working height for most collaborative applications.
- Easily integrates into current workspace or quickly relocates with a pallet jack or forklift.
- Built-in leveling feet provide a stable platform while the HC10 runs at maximum speed and payload capacity.
- 2-meter robot cable with 90-degree connector to controller for efficient wire management.
- HC10 robots require 380-480 VAC 3-phase electrical supply when deployed with an HC10 workstation.
- Optional area scanners provide speed and separation monitoring.
- Optional stack light can alert nearby users to robot movement, alarms or general status.

Note: Robot and controller sold separately.



Dimensions: 1,091 mm (H) x 734 mm (W) x 805 mm (D)

YASKAWA AMERICA, INC. 100 Automation Way | Miamisburg, OH 45342  
937.847.6200 | motoman.com

Technical specifications subject to change without notice. | Motoman is a registered trademark.  
All other marks are the trademarks and registered trademarks of their respective owner.  
DS-979-A ©2023 Yaskawa America, Inc. OCTOBER 2023