

SMART PENDANT

SIMPLIFIED ROBOT PROGRAMMING

KEY BENEFITS

Easily add and configure task-based applications, vision, tools, safety scanners and more with Yaskawa installation packages

Simplified INFORM programming supports powerful controller functionality

Easy-to-understand, intuitive format mitigates retraining requirements and enables fast and efficient robot deployment

Smart Frame eliminates coordinate frames; the robot adapts to the user

3D viewer for real time or simulated movement

Advanced interface panel for user customizable GUI/HMI

COMPATIBILITY

YRC1000

AR-series
GP-series ≤80 kg
HC-series
PL-series ≤ 190 kg

YRC1000micro

GP-series ≤12 kg
HC-series
MotoMini
SG-series



- Easy-to-use touchscreen teach pendant provides simplified programming and fast implementation with support for majority or 100+ Inform commands.
- Short learning curve compared to standard pendants; ideal for novice robot programmers.
- Programming time is reduced resulting in quick implementation.
- Status overlays with custom positioning improve teaching and playback operations.
- Quick error recovery and contextual help reduces costly downtime.
- Basic arc welding support including ARCON, ARCOFF, and weaving.
- Interface displays relevant information during playback, allowing users to easily monitor variables, positions and I/O during runtime.
- Visual I/O and safety setup with drag and drop logical editor.
- Simplified tactile membrane keys for quick access to playback and jogging operations.
- Support for Yaskawa and third party application software installations.
- Basic concurrent job support.
- Classic interface enables additional functions.
- Configurable 3D viewer can display/hide robot frame, tool frame, user frames, range limits and safety zones.



Smart Frame's patented technology determines the user's orientation relative to the robot. This eliminates the use of conventional coordinate (X, Y, Z) frames and utilizes intuitive natural language directions for easy command of the robot movement.

SMART PENDANT

SIMPLIFIED PROGRAMMING

- Descriptive commands - no abbreviations to memorize
- Favorites bar - easy access to commonly used commands
- Job Editing - touch to edit functionality
- Command Builder - guides user to insert commands
- Tool Property Determination - guided and automatic sequences
- Variables and I/O - easy to view, name and modify
- Contextual help files and how-to guides

SMART PENDANT COMPONENTS

- 10.1-inch touchscreen teach pendant with 3-mode key switch, Emergency Stop and enabling switch
- 8-meter cable (cable extensions are available)
- Modern tablet-based Graphical User Interface (GUI)



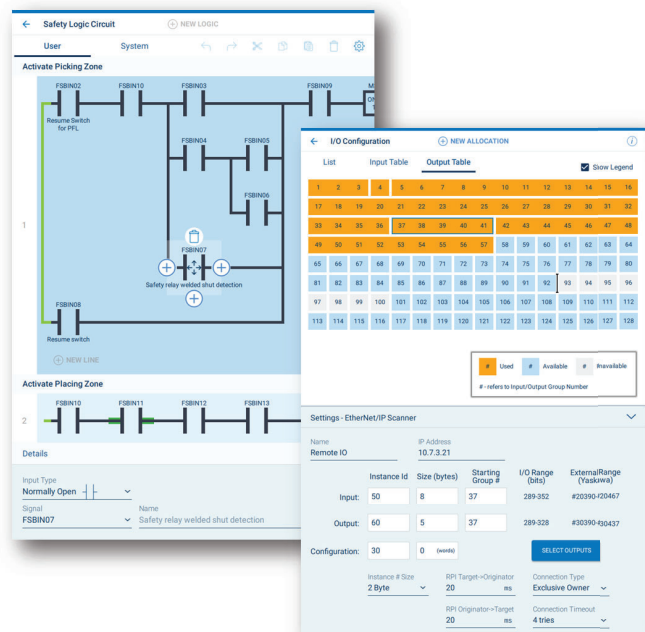
Easy INFORM: Descriptive commands no longer require users to memorize abbreviations.

Feature	Available	Not Available
Job Creation/Editing	X	
Macro/System Job Creation/Editing	X ¹	
Concurrent Job Creation/Editing	X	
INFORM: Primary Motion, I/O Instructions, Basic Math, Arithmetic Expressions, Basic Arc Welding, Message	X ²	
INFORM: Set Logical Expressions, Reverse Paste	X ¹	
INFORM: Call-If, Print, Dialog, Input, Spot Welding, Line Lock		X
Relative Job	X	
Legacy Job Support (DX200 & Previous)		X
User Frame, Zone, Tool and Tool Interference Setup	X	
Ladder Logic Editor		X
Path Confirmation (FWD)	X	
Path Confirmation (BWD)	X	X
Conveyor Tracking		X
T-Axis Control Function (Endless Rotation Function)		X
External Axis Configuration and Programming	X	X
Multiple Robot Control		X

For a complete listing of pendant functional capabilities, visit motoman.com

X¹ - Only available on Smart Pendant when using Classic Interface.

X² - Not currently compatible with Universal Weldcom Interface.



Graphical editors enable user to quickly configure system I/O and safety logic.

YASKAWA

YASKAWA AMERICA, INC. 100 Automation Way | Miamisburg, OH 45342

937.847.6200 | motoman.com

Technical specifications subject to change without notice. | Motoman is a registered trademark.

Windows is a registered trademark of Microsoft Corp.

All other marks are the trademarks and registered trademarks of Yaskawa America, Inc.

©2025 Yaskawa America, Inc. FEBRUARY 2025